

## THE FULL MEASURE

Inside the issue:

Maltbys Directors 1

New Faces 2&3

Projects Underway  
& On Site 3

New Commissions  
3

Queenstown Office  
3

Speights Ale House  
4

Rotorua Maori Arts  
and Crafts Institute  
4

Social Events 5

Events Calendar 5

Quiz 6

Caption Contest 6



### Directors

The Directors and Principals all headed to Wellington for the Quarterly Directors meeting. While the Directors were together we thought it was time to update the photo, you probably know their names, but do you know the faces.

On Saturday they headed out to Boom Rock for some team building. Wellington and Queenstown combined to compete against Auckland in:

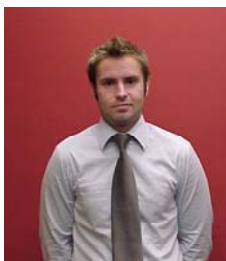
- ✦ A problem solving puzzle suspending a rock above the ground, without touching it, using only manuka poles, string, a spade and a saw.
- ✦ Archery
- ✦ Clay bird shooting
- ✦ Extreme golf

### Results

	Auckland	Wellington & Queenstown
Puzzle	2.4m high	3.0m high
Archery	525 points	925 points
Clay bird	29 points	28 points
Golf	Brian Maltby was the only one to hit the green, there was a lot of effort put into his swings!	

## New Faces

### Wellington



Cameron Postlewaight

Born in Lower Hutt, I have lived throughout the Wellington Region my whole life. After spending a couple of years in the trades after school and a year at Victoria University studying Building Science, I decided to pursue a career in Quantity Surveying. I joined Maltbys at the beginning of May and I am currently in my third year of study at Massey at Wellington. My interests include surfing, snowboarding, mountaineering, and motor sport



Gareth Shawcross

Born in the pie eating capital of the North West of England, Wigan has been the central point of my life, you try to get away but the pies always draw you back. My break finally came where I said to myself the pies the limit and its finally time to move on. What made me come to New Zealand people ask, well I heard there was a Lions tour (we may even win one test match yet), the country was amazing and the kiwis were friendly although sometimes difficult to understand especially the dialect.

I have been in NZ for over two months now and have enjoyed every minute of it - so far. In that time, I have driven to the main tourist destinations, worked on farms herding cows and deer, been to the local pub to witness the bare knuckle fighting and sampled the Wellington winds. What more is there to discover? My plans for the future are to stay in NZ permanently that's if customs don't throw me out and see what it has to offer.



Charlie Davis-Pou

I joined the Maltbys team at the start of July. I have spent the past 3 years working for a commercial interior construction company where duties included preparing tendered and negotiated quotations, contract administration and final accounting. I decided to make the move into the consulting Quantity Surveying environment looking to build upon and diversify my skills and experience. I graduated in 2004 with a Bachelor of Construction (Quantity Surveying) from Massey University. Fellow ex-students include Dawn from Maltbys Wellington office and Ross Wood in the Queenstown office.

I am a born and bred Wellingtonian. My interests include rugby, gym, swimming and chen style tai chi. My 3 year old son, Rohan, keeps me busy and out of trouble over the weekends.

### Auckland



Monique Smith

I work at Maltbys Mondays & Tuesdays on the front desk. What do I do with the rest of the week you say? Well I'm the Mum to two beautiful little boys. Cameron who is 6 in July is our little soccer player and our newest addition Cody is 6 months and already crawling. I live in Manukau with my husband Anthony and our two boys. I have travelled a little but Auckland is definitely home.

My interests are anything fast and exciting. Before becoming a Mum I competed in equestrian events and I hope to return once Cody is older. I enjoy getting together with friends for drinks and laughs, decorating, movies and spending time with my whole family.



Paul Cook

Born and bred in Auckland I have come largely from a carpentry background. Apprenticed to Dominion Constructors after a stint at farm school. I have been building in Auckland for the last 14 years. After some time on the tools I decided to charge it up and went to Unitec and graduated from the NZDS in 2004.

I am married with three daughters so life is very busy. I coach 2 of my daughter's soccer teams and I try to sneak out for the odd surf when someone leaves the back door open.

## Auckland



Daria Gracheva

I grew up in a small city of Tver, which is situated between the two capitals of Russia, Moscow and St. Petersburg. After doing 3.5 years of university in Russia studying linguistics and international communication and working as an interpreter in an international company, I decided to make a change - a resolute decision to get a new degree, get to know new people, in a different country... well - everything new! So here I am in New Zealand doing my second year of a Bachelor of Commerce in Economics and International Business at the University of Auckland. As for my interests, well... coming from a family of a piano teacher I spent most of my childhood at a music school, playing instruments and doing school work (in whatever time was left). As a member of an ensemble of young violinists and a choir I enjoyed travelling to festivals around Europe, to such countries as England, Belgium, Germany, Holland and France. Apart from music and travelling, I love dancing and playing tennis and soccer, skating and swimming.

## Projects Underway & On Site

### Auckland

- ✦ Tauranga Hospital – Enabling Works & New Main Entry
- ✦ Summerset Retirement Village, Tamaki
- ✦ Auckland University, Engineering Library Extension
- ✦ Empire Apartments
- ✦ Botany College, Stage Two
- ✦ Orewa Primary School
- ✦ Dilworth School Expansion
- ✦ Fidelity Life Office Extension
- ✦ Downtown Ferry Terminal
- ✦ Ruakuri Caves Tourist Development

### Queenstown

- ✦ Jacks Point

### Wellington

- ✦ Beehive Stage 2
- ✦ Hadlow School
- ✦ Masterton Pak’N’Save
- ✦ Summerset Taupo
- ✦ Summerset Napier
- ✦ Summerset Aotea
- ✦ Summerset Palmerston North

## New Commissions

### Auckland

- ✦ The Marina Club, Tutukaka – apartments
- ✦ Smith & Caughey, Newmarket – refurbishment & extension - \$2.5m
- ✦ New common room building, Diocesan School - \$5.5m

### Queenstown

- ✦ Remarkables Park
- ✦ Man Street Carpark

### Wellington

- ✦ NZ Kennel Club
- ✦ Westfield Shopping Centre
- ✦ NZ Defence Force Housing Standards
- ✦ Waitangi Park Precinct 1-2 & 7
- ✦ Foodstuffs – Numerous

## Queenstown Office

Staff numbers continue to grow, the arrival of Tom Berliner on the 18th July will take the office total to 4!!! Tom, Angie and family are currently on route from Auckland. Keep an eye out in the next newsletter for more information on Tom!

## Speights Ale House

The Maltbys Wellington office are currently working on the bank funding for this project. The former Manor Print building on the Jackson/Victoria Sts corner is being transformed into a Speights Ale House and Restaurant. Built in the early 1900s, the two storey building's façade—which has an Historic Places Trust listing—is being preserved. Inside, major earthquake strengthening work and new steel beams to allow removal of pillars and opening up of the downstairs bar, is going on. The partners had hoped to be pulling their first pints by the end of this month but meeting all the heritage requirements has pushed out the opening date to the end of September/ early October.



## Rotorua Maori Arts and Crafts Institute

The Auckland office is currently scheduling the large redevelopment of the institute. Stage one of the \$2.4m project will begin with a site redevelopment, infrastructure upgrade and the construction of new carving and weaving schools. Stage 2 will consist of the refurbishment of existing administration, kitchen and toilet blocks, followed by the construction of 4 new buildings including a restaurant, kiosk and visitors centre.



## Social Events

### Wellington

Maltbys Wellington went up against the Accent Architect team in April. The Maltbys trophy was at stake it was a nail biting finish but we managed to take the win.



### Brent's Farewell

Brent was with the company for the last 2 and half years but finished up in June to head to Australia. Brent's smart wit will be missed in the Wellington office so the social club thought we would send him off in style! On Wednesday 15<sup>th</sup> June we all climbed aboard the Unimog and headed for the south coast! A fantastic afternoon was had by all, with the spectacular views of the coast and great wine & food! Brent showed his true colours in the final weeks of work and managed to obtain a new nickname. He is now known as "The Nark" A great trophy to add to his collection!



### Auckland

#### Auckland Lunch

With staff numbers diminishing, work load increasing, tiredness looming it was decided we needed an afternoon away from the office. We took ourselves to Mink Café for a drink or two or three with lunch and a chance to meet our newest staff members Daria Gracheva and Paul Cook. The work was still there the next day but we had a great afternoon.

### Queenstown

#### Duck Shooting

Ross was out not bad for a



on the opening day of Duck shooting in May, 132 ducks between 6 people, first timer!!

## Events Calendar

### Auckland

- ✦ Mid Winter Xmas

### Wellington

- ✦

### Queenstown

- ✦ Prenzel Party (like a Tupperware party but you drinks schnapps all night instead!)

Maltby & Partners  
Level 2 Princes Court  
2 Princes Street  
PO Box 2176  
**Auckland**

T 09 303 4394  
F 09 307 1034  
E admin@maltby.co.nz  
I www.maltby.co.nz

Maltby & Partners  
Level 3  
22 Panama Street  
PO Box 1034  
**Wellington**

T 04 499 1468  
F 04 499 4648  
E admin@maltby.co.nz  
I www.maltby.co.nz

Maltby & Partners  
Level 2, The Station  
Building  
7-9 Duke Street  
PO Box 975  
**Queenstown**

T 03 442 5965  
F 03 442 5931  
E admin@maltby.co.nz  
I www.maltby.co.nz

#### CONTRIBUTIONS

If you have any juicy gossip, great photos or other information you would like to see in the newsletter they will be gratefully accepted, providing they are interesting!

#### EDITOR

Kirsten Whitta  
kirstenwhitta@maltby.co.nz

## Quiz Time

This is the actual test given by Microsoft to prospective employees. It is solvable without tricks. Lets see if the Maltbys staff are as good!

U2 has a Concert that starts in **17 minutes** and they must all cross a bridge to get there. All four men begin on the same side of the bridge. You must help them across to the other side. It is night. There is one flashlight. A maximum of two people can cross at one time. Any party who crosses, either 1 or 2 people must have the flashlight with them. The flashlight must be walked back and forth, it cannot be thrown etc. Each band member walk at a different speed. A pair must walk together at the slower mans pace:

Bono	1 minute to cross
Edge	2 minutes to cross
Adam	5 minutes to cross
Larry	10 minutes to cross

For example - if Bono and Larry walk across first, 10 minutes have elapsed when they get to the other side, If Larry then returns with the flashlight, a total of 20 minutes have passed and you have failed the mission.

Note:-

There is no trick behind this. It is a simple movement of resources in the appropriate order. There are two known answers to this problem.

Microsoft expects you to answer this question in less than 5 minutes!!

The first one to email the correct answer to Grant Browne (gbrowne@maltby.co.nz) will receive a fantastic prize!

## Here's your second chance to take home prizes of outstanding value!



Come up with the best caption of what Colin is saying!. Email you answer to Kirsten as soon as possible